



Installation Guide

Document Header	
Reference i-plm.net Version	0.8.4
Date	August 2010

Comments and Feedback

i-plm.net is an open source solution based on ARAS Innovator. Please feel free to send comments to us to improve the solution. You can reach i-plm.net support via email support@i-plm.net or please use the online forum on www.i-plm.net.

Table of Content

1	Introduction	2
2	Installation using the Solutions Upgrade Tool	3
2.1	Prerequisites	3
2.2	Package Installation Procedure.....	4
2.2.1	Preparation	4
2.2.2	Import	5
3	Installation using the Database Dump.....	7
3.1	Prerequisites	7
3.2	Installation Procedure.....	7
4	Installation of server code	11
5	Branding.....	12
6	Client Configuration	13
Appendix A	Related Documents.....	14

1 Introduction

This installation guide provides an easy way of deploying the i-plm.net solution to the ARAS Innovator framework. Basically there are several approaches to deploy the solution package. Two rapid ways are described:

1. Deployment using the ARAS Solution Upgrade Tool
2. Deployment using a database dump

As i-plm.net is based on ARAS Innovator, an ARAS innovator installation must be executed upfront. The following software packages are required and can be downloaded from ARAS website (www.aras.com):

- ARAS Innovator
- Manual .NET Security Config Tool
- MS SQL Server, by example MS SQL Server Express

All software packages are available free of charge.

For ARAS Innovator a license key is required. The license key can be requested from the ARAS website based on the MAC address of the MS Windows installation for the ARAS Innovator.

2 Installation using the Solutions Upgrade Tool

2.1 Prerequisites

An installation using the Solution Import/Export Tool requires an ARAS Innovator installation and a preconfigured database with the CORE package. Please follow the installation instruction.

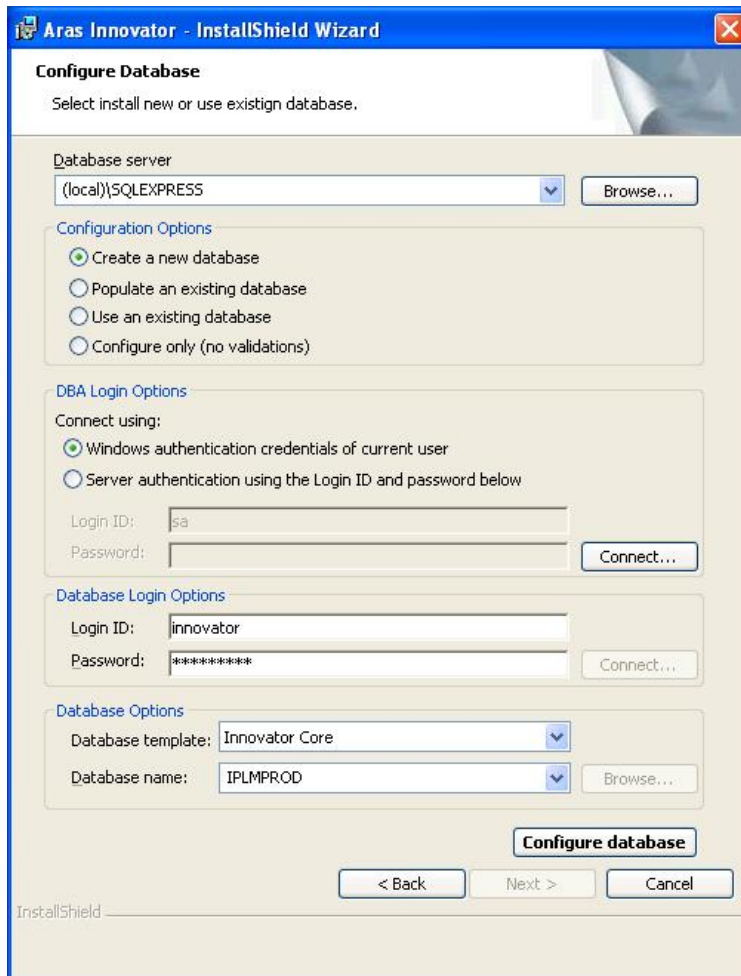


Figure 1 - Database configuration

Please choose as a Database Template 'Innovator Core' to configure the database. The database can be named as required.

2.2 Package Installation Procedure

2.2.1 Preparation

For the import of the i-plm.net packages a special “iPLM Admin” user will be used so that this user becomes the owner of the whole solution. This user needs to be present before the import is started and therefore cannot simply be included in the package.

To create this user and do some other modifications to the standard Innovator installation a so called ‘AML’ script needs to be executed.

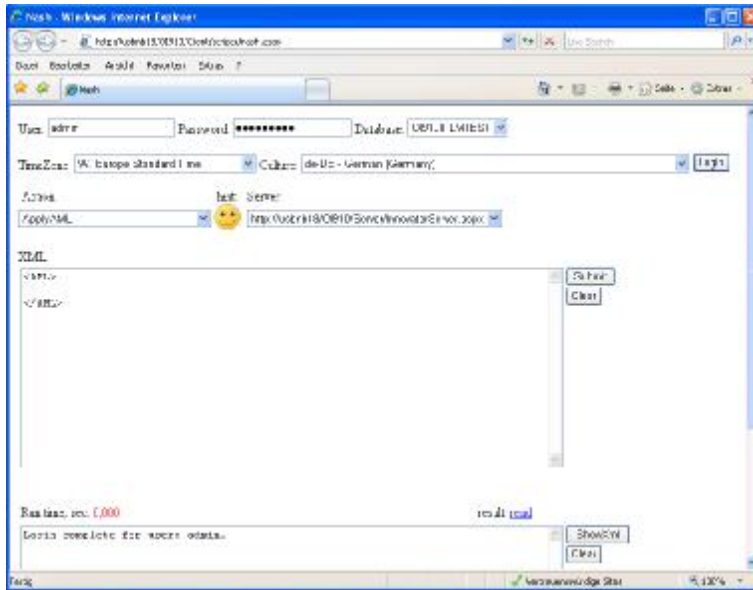


Figure 2 - Prepare the package import

Open Internet Explorer and go to <http://<Server>/<Innovator>/Client/scripts/nash.aspx> where <Server> stands for your Server and <Innovator> for your Innovator instance.

Enter the user ‘admin’ and your admin password (default is ‘innovator’). Select the database which you created for i-plm.net and then press ‘Login’. The message area should now show the text ‘Login complete for user: admin.’.

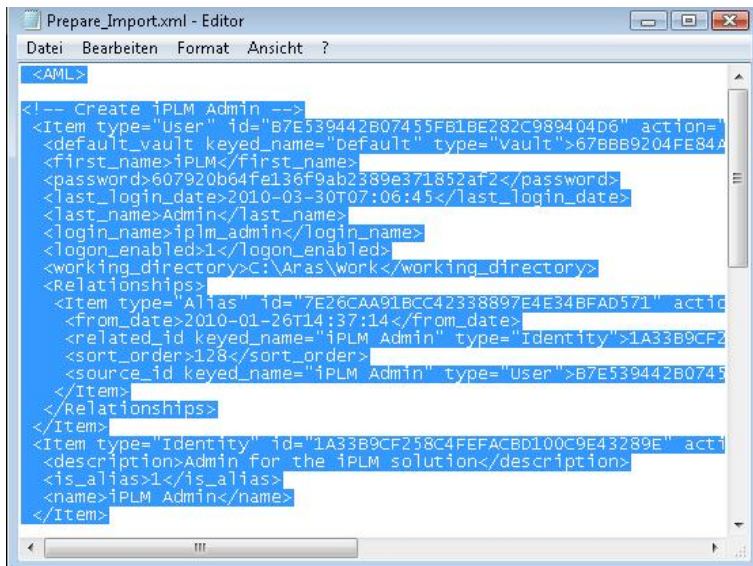


Figure 3 - Copy the AML script

Now find the file ‘Prepare_Import.xml’ in the ‘Tools’ folder in the i-plm.net installation folder.

Open the file with a text editor (e.g. Notepad) select and copy the whole text.

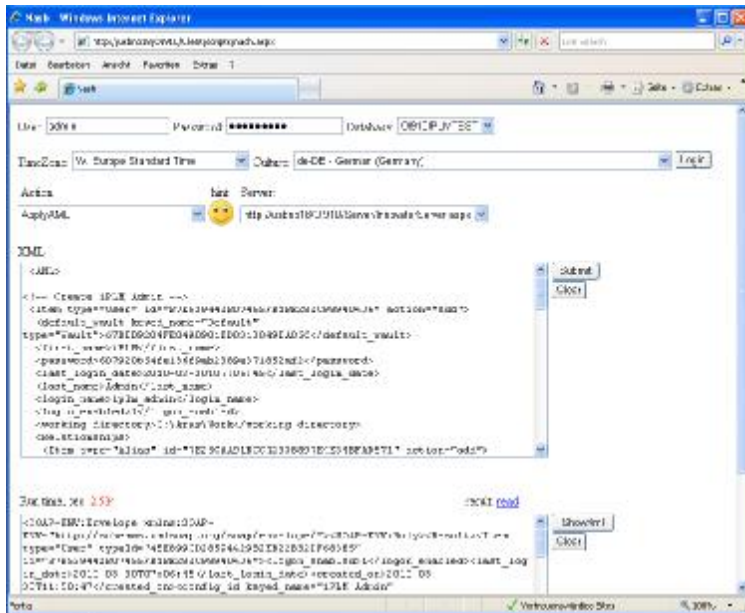


Figure 4 - Apply the AML script

Go back to the page you opened Internet Explorer and press the ‘clear’ button next to the ‘XML’ input field. Paste the text from the ‘Prepare_Import.xml’ file into the ‘XML’ field then press ‘Submit’

You should now be able to log into Innovator with user ‘iplm_admin’ and password ‘innovator’.

2.2.2 Import

Download the “Package Import Export Utility” from

<http://www.aras.com/communityprojects/?projectid=DD32FF42D8B14CB28CD4732AAF2F5349>

After unpacking you will find a folder “SolutionsUpgradeTool902” which contains a detailed manual to the “Package Import Export Utility” (“Aras Innovator 9.0 - Solutions Upgrade Tool.pdf”). If you need more information about the import tool please read this document.

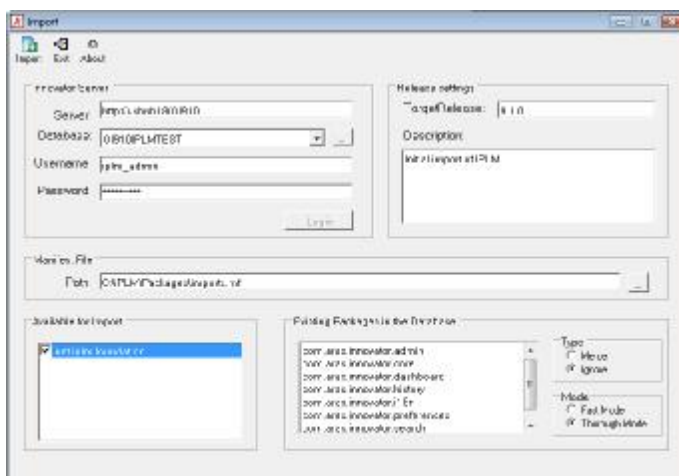


Figure 5 - Import tool

Go to the “import” sub-folder and double-click on the “import.exe” file.

Enter the server address as <http://<Server>/<Innovator>> where <Server> stands for your Server and <Innovator> for your Innovator instance.

Click on the ellipsis next to the Database field and then select the database you want to install i-plm.net in.

In the field “ Username” enter “iplm_admin” and as password “innovator”. Then press “Login”.

In the “TargetRelease” field enter the version number of the Innovator you are using. Optionally also enter a short description.

Next select the Manifest File. This is called “imports.mf” and can be found in the “Packages” folder of the i-plm.net installation directory (e.g. “C:\iPLM\Packages\imports.mf”).

- Check the “net.iplm.foundation” package in the “Available for Import” field.
- Set the “Type” selection to “Ignore” and the “Mode” to “Thorough Mode”.
- Then press the “Import” button in the left top corner.
- After the import has completed press the “Exit” button to close the tool.

i-plm.net comes with default users:

- iplm_admin, a user with fully granted permissions
default password: innovator
- iplm_test, a user to test use cases
default password: none

Now log into the application and assign a password to the iplm_test user.

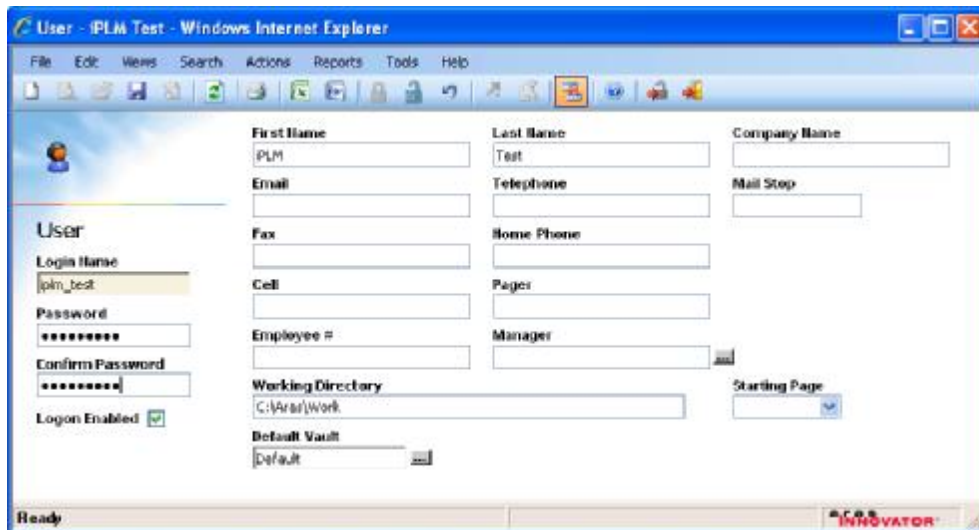


Figure 6 - Copy the AML script

3 Installation using the Database Dump

3.1 Prerequisites

A database dump based installation requires a standard ARAS Innovator Installation and a preconfigured database. Please note that the i-plm.net database must be added to 'InnovatorServerConfig.xml' file located in the Innovator installation path. Make sure that the innovator database user is granted with sufficient permissions.

3.2 Installation Procedure



Figure 7 - Login to SQL Management Studio

The installation of a database dump can be easily executed using the MS SQL Server Studio Express. The software package can be downloaded from the Microsoft.

First of all open the SQL Management Studio Express and authenticate in accordance with the credentials of the SQL Server. To login, users can use either Windows credentials or dedicated SQL Server credentials.

On the left side tab, choose 'Databases' to find the database to restore. For example we continue with the 'IPLMDEV' database. To open the restore dialog, please click your database to show the context menu, choose 'Task' ⇒ 'Restore' ⇒ 'Database'.

On the left side tab, choose 'Databases' to find the database to restore. For example we continue with the 'IPLMDEV' database. To open the restore dialog, please click your database to show the context menu, choose 'Task' ⇒ 'Restore' ⇒ 'Database'.

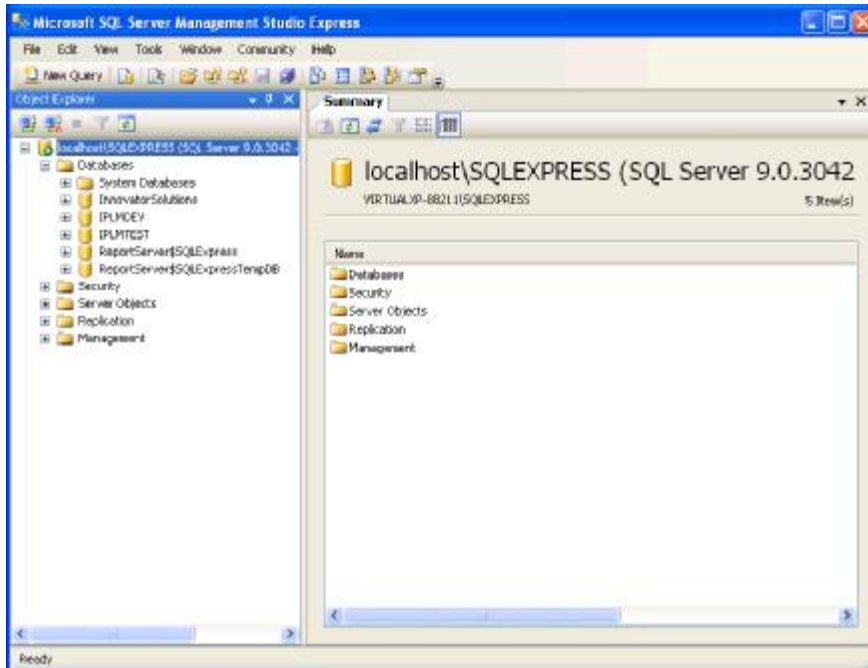
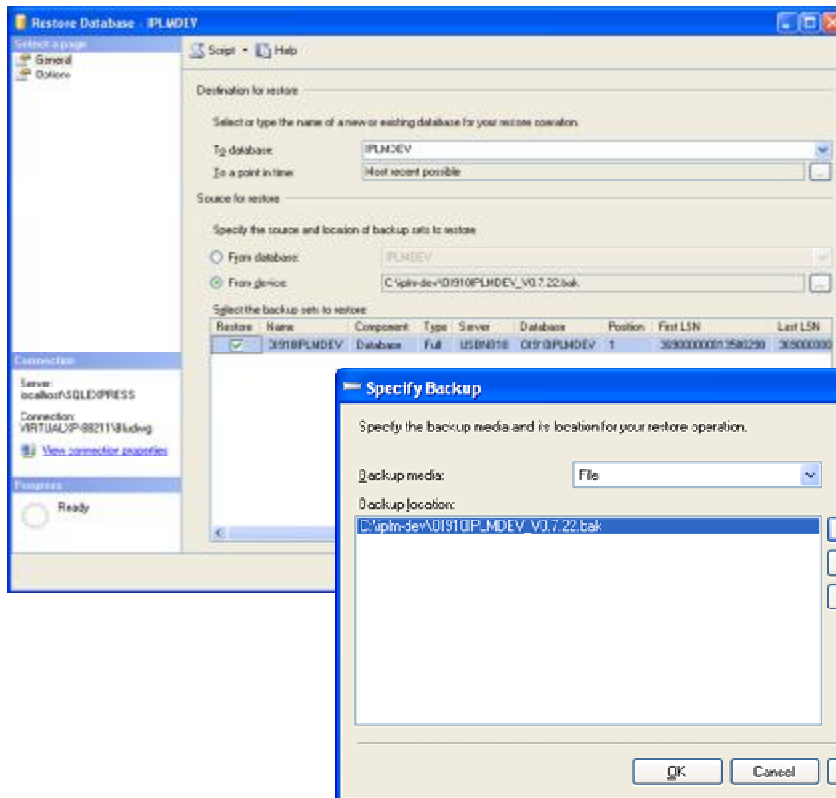


Figure 8 - SQL Management Studio Express interface

In the restore dialog please specify the source location of the back. For this restore choose the option 'from device'.

To locate the database dump, add the file to the backup dialog and press 'OK'.

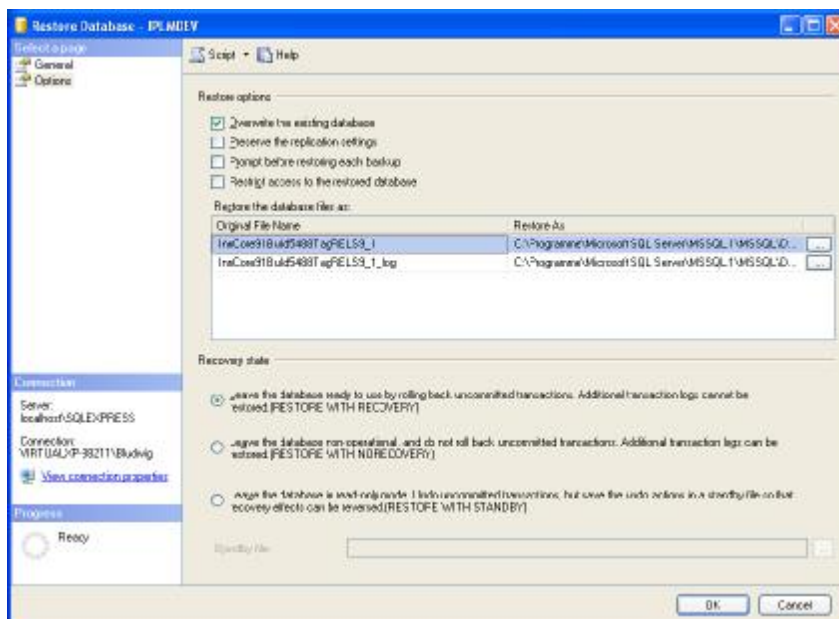
Please make sure, that the 'Restore' option of the list of restore sets is enabled.



The backup file (iPLM_vn.n.nn.bak) can be found in the “Bak” folder of the I-PLM.NET installation directory

Figure 9 - General options - choose a dump to restore

Next step is to configure the options for the restore process. The Restore option ‘Overwrite the existing database’ has to be enabled.



Please notice that the file locations for the restore have to be changed in accordance with the MS SQL Server installation and the files of the chosen database. A standard installation of MS SQL Server will copy all files to C:\Program Files\Microsoft MSSQL Server\MSSQL.1\MSSQL\Data. Both file the data file .mdf and log file .ldf has to be mapped – if different from the database dump.

Figure 10 - Restore Options

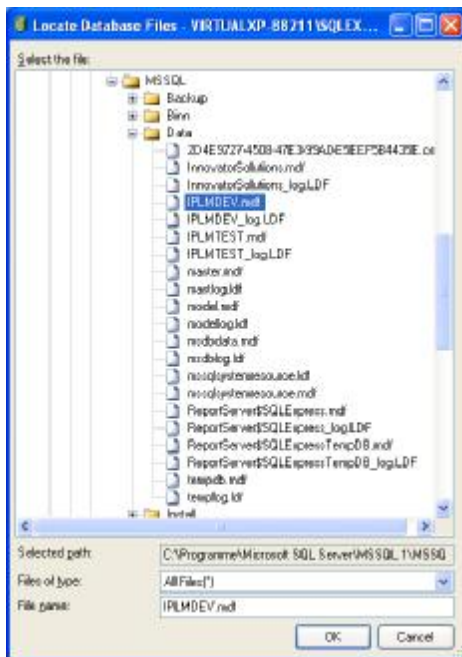
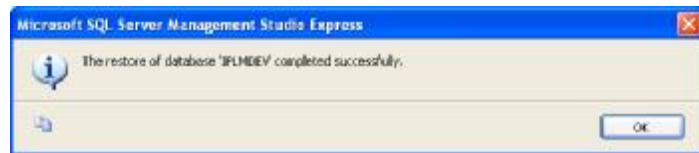


Figure 11 - Database data and log files

After complete configuration of the restore option the 'OK' button can be pressed. The system responds with a success message if the restore succeeded.



After the restore the permissions have to be granted to the Innovator database user. In the example the user is simply called 'innovator'. The innovator db user is changed to the to the group 'db_owner'.

Please adopt the user name and execute the script in the database. Again click the database to get the context menu and choose 'New Query'. Copy the script to the command line and click 'Execute'.

```
exec sp_change_users_login 'Update_One', 'innovator', 'innovator'
go
exec sp_grantdbaccess 'innovator','innovator'
go
exec sp_addrolemember 'db_owner','innovator'
go
```

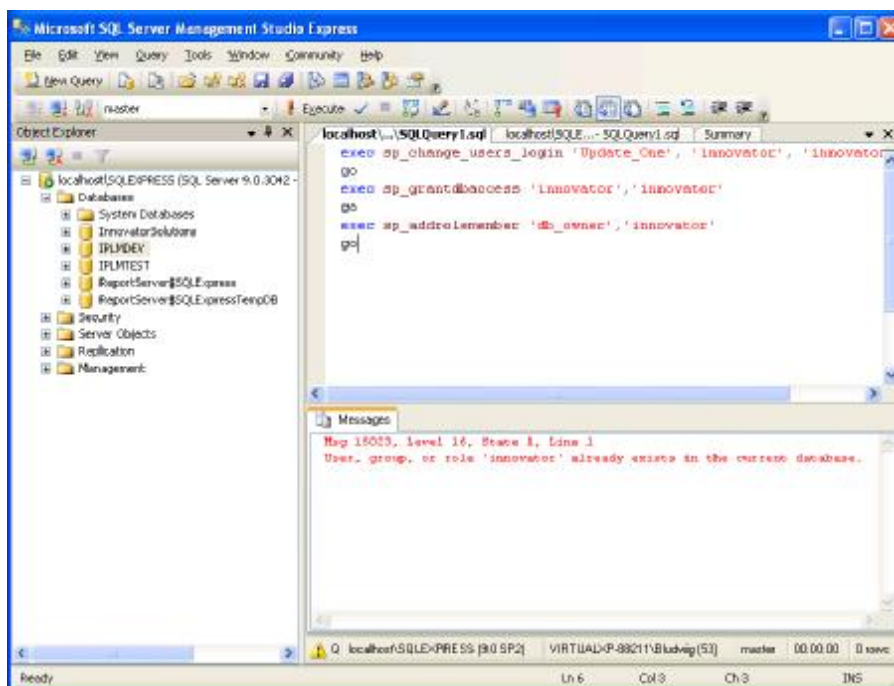


Figure 12 - Grant permissions to database user

The system may respond with the message that the user and user group already exists but permissions are granted.

To login to i-plm.net use the following credentials.

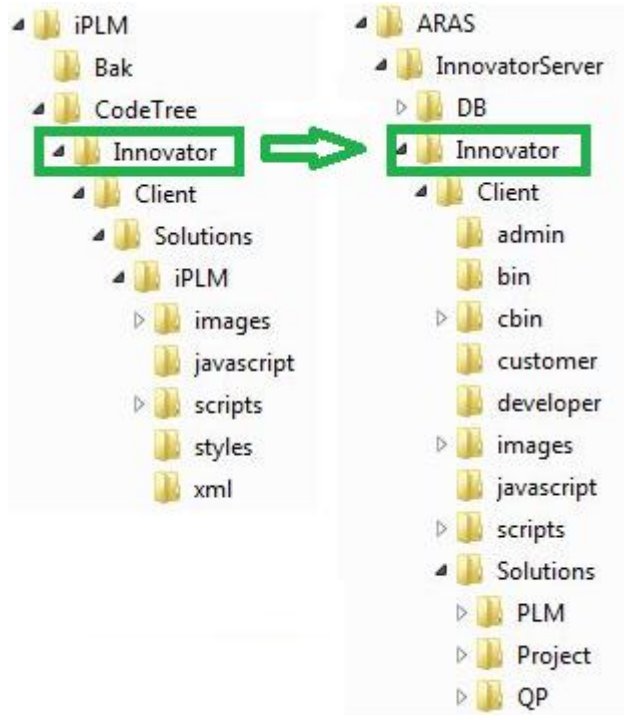
- iplm_admin, a user with fully granted permissions
default password: innovator
- iplm_test, a user to test use cases
default password: innovator

4 Installation of server code

Go to the directory where you unzipped the i-plm.net installation file. Inside the 'CodeTree' directory you will find a directory structure that needs to be copied over the Innovator server installation.

Before you do that it is recommended to backup the Innovator installation directory first.

If you are warned that existing files are overwritten (which should not happen on a fresh installation) you may need to make sure you do not lose any changes you may have made to those files.



Copy the 'Innovator' directory over the corresponding directory in the Innovator server installation. There may be more than one directory named 'Innovator'. Make sure you copy over the one that contains the 'Client' and 'Server' directories.

Release Notes Version 0.8.4:

This Version does not any server code anymore.

To make the version work, it is only required to copy the code tree to covering pictures und icons. See next chapter 5 Branding.

5 Branding

If you want to create your own look and feel you need to add or replace some picture files.

- Some files and labels can be specified in the InnovatorServerConfig.xml inside the UI-Tailoring tag:

```
<UI-Tailoring login_logo=" ../images/logos/innovator_splash.jpg"  
branding_img=" ../images/logos/banner_02.jpg" product_name="Aras Innovator"  
banner_url=" ../scripts/banner.aspx" banner_height="50" />
```

As you can see the 'banner.aspx' file that creates the top section of the Innovator main page can also be replaced or adapted.
- Innovator\Client\images\Backgrounds\banner_bg.gif
The original 'banner.aspx' does not allow to set this file's name in the UI-Tailoring tag (as it does with 'branding_img') therefore if you do not want to adapt 'banner.aspx' you need to edit the file and save it with the same name.
This file is just a narrow vertical line of fading blue that fills the background of the top section.
- Innovator\Client\images\logos\branding.gif
This is the 'aras INNOVATOR' logo in the lower right corner
- More detailed customizations are possible by editing the source files in the client directory.
- Note that in the case of an upgrade to a new Innovator release most of these adoptions need to be carried over manually.
- Note that these files will be used by all Innovator instances on the same IIS virtual directory .

6 Client Configuration

For detailed information on client configuration please download the following guides at

[http://www.aras.com/support/documentation/DocumentView.aspx?file=.%2F9.1.0%2FInstallation](http://www.aras.com/support/documentation/DocumentView.aspx?file=.%2F9.1.0%2FInstallation%20Configuration%2FAras%20Innovator%209.1%20-%20Internet%20Explorer%20Client%20Machine%20Configuration.pdf) and
Configuration/Aras Innovator 9.1 - Internet Explorer Client Machine Configuration.pdf

and

[http://www.aras.com/support/documentation/DocumentView.aspx?file=.%2F9.1.0%2FInstallation](http://www.aras.com/support/documentation/DocumentView.aspx?file=.%2F9.1.0%2FInstallation%20Configuration%2FAras%20Innovator%209.1%20-%20.NET%20Client%20Configuration.pdf) and
Configuration/Aras Innovator 9.1 - .NET Client Configuration.pdf

Appendix A Related Documents

Document	Source
Aras Innovator 9.x - Installation Guide.pdf	www.aras.com
i-plm.net User Guide	www.i-plm.net